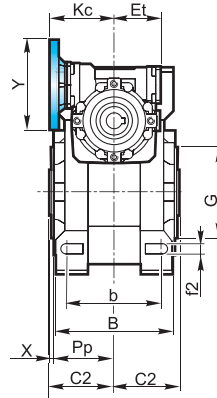
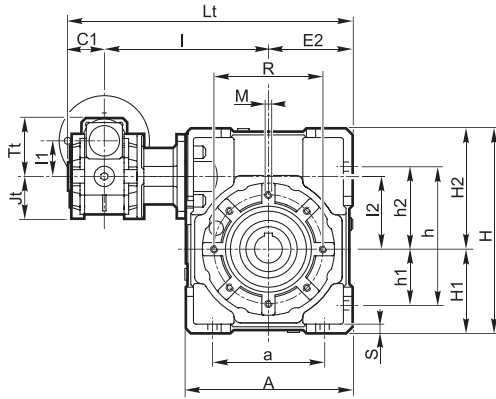


5.6 Dimensioni

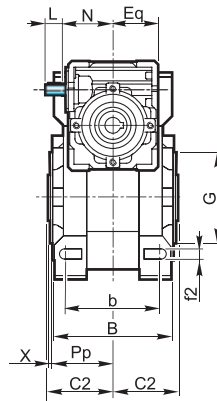
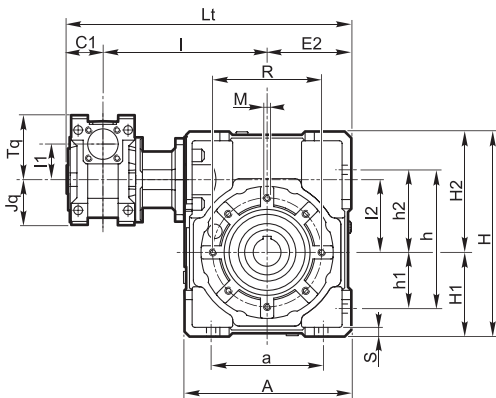
5.6 Dimensions

5.6 Abmessungen

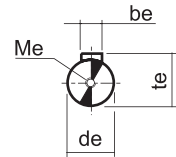
**KXC**



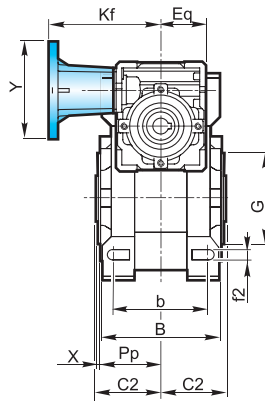
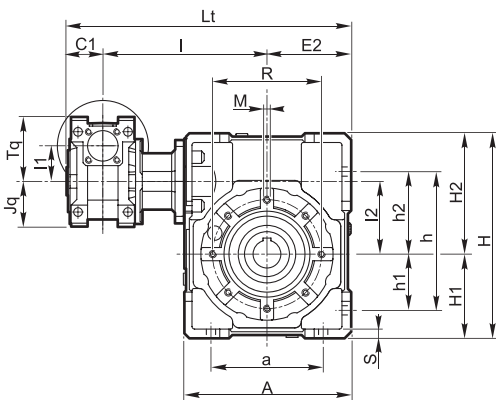
**XXA**



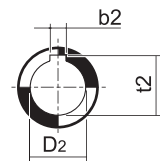
Albero entrata  
Input shaft  
Antriebswelle



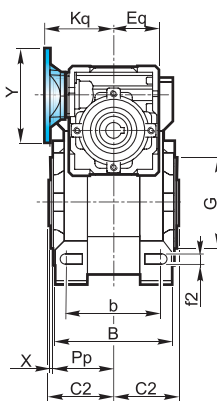
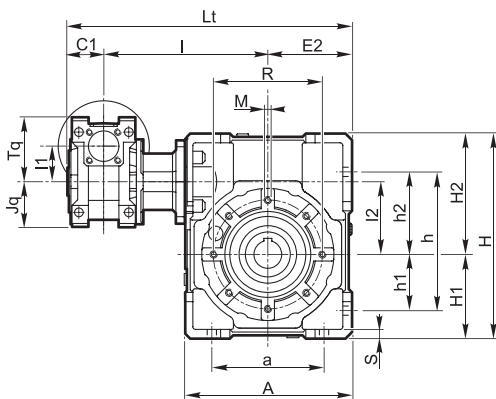
**XXF**



Albero uscita cavo  
Output hollow shaft  
Abtriebshohlwelle



**XXC**

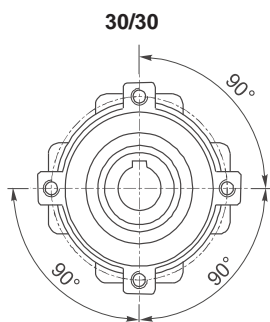


5.6 Dimensioni

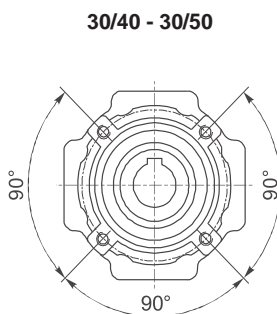
5.6 Dimensions

5.6 Abmessungen

Flangia pendolare / Side cover for shaft mounting / Aufsteckflansch

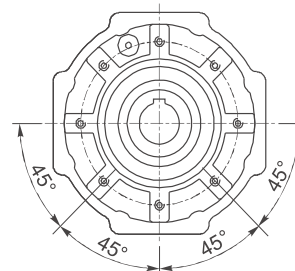


4 Fori / Holes / Bohrungen



4 Fori / Holes / Bohrungen

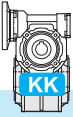
30/63 - 40/63 - 40/75 - 40/90 - 50/75  
50/90 - 50/110 - 63/110 - 63/130



8 Fori / Holes / Bohrungen

KXC - XXC - XXF -XXA																																		
	a	A	b	be	b <sub>2</sub>	B	C <sub>1</sub>	C <sub>2</sub>	de	D <sub>2</sub> H7	Et	Eq	E <sub>2</sub>	f <sub>2</sub>	G h <sub>8</sub>	h	h <sub>1</sub>	h <sub>2</sub>	H	H <sub>1</sub>	H <sub>2</sub>													
30/30	54	80	44	3	5	—	56	31.5	9	14	—	41	40	40	6.5	55	71	27	44	97	40	57												
30/40	70	105	60		6	6	71																39	18	19	50	6.5	60	90	35	55	125	50	75
30/50	80	125	70		8	8	85																46	24	60	8.5	70	104	40	64	150	60	90	
30/63 40/63	100	147	85	4	8	—	103	56	11	25	—	51	50	72	9	80	130	50	80	182	72	110												
40/75 50/75	120	176	90																				8	8	112	39	60	14	28	30	60	60	86	11
40/90 50/90	140	203	100	5	10	—	130	39	70	35	—	51	50	103	13	110	172	70	102	248.5	103	145.5												
50/110	170	252.5	115																				46	14	—	60	60	127.5	14	130	210	85	125	310.5
63/110	170	252.5	115	6	12	—	143	56	77.5	42	—	71	72	127.5	14	130	210	85	125	310.5	127.5	183												
63/130	200	292.5	120	6	14	14	155	56	85	45	48	—	72	147.5	15	180	240	100	140	355	147.5	207.5												

KXC - XXC - XXF -XXA																					
	l	l <sub>1</sub>	l <sub>2</sub>	Jt	Jq	K <sub>c</sub>	K <sub>q</sub>	L	L <sub>t</sub>	M	Me	N	P <sub>P</sub>	R	S	Tt	Tq	t <sub>e</sub>	t <sub>2</sub>	X	
30/30	100	31.5	31.5	37.5	40	57	57	15	171.5	M6x8	M4x10	44.5	29	65	5.5	52.5	57	10.2	16.3	—	1.5
30/40	122		203.5						M6x10	36.5			75	6	20.8				21.8	1.5	
30/50	132		223.5						M8x10	43.5			85	7	27.3				27.3	1.5	
30/63	145	40	63	43.5	50	75	75	20	248.5	M8x14	M4x12	57.5	53	95	8	68.5	75	12.5	28.3	—	2
40/63	150		261						M8x14	53			95	8							
40/75	174.5	50	75	53.5	60	82	82	25	299.5	M8x14	M5x13	67.5	57	115	10	82.5	90	16	31.3	33.3	2
50/75	190		322						M8x14	57			115	10							
40/90	184.5	40	90	43.5	50	75	75	20	326.5	M10x18	M4x12	57.5	67	130	12	68.5	75	12.2	38.3	—	2
50/90	200		349						M10x18				67	130	12						
50/110	226	50	110	53.5	60	82	82	25	399.5	M10x18	M5x13	67.5	74	165	14	82.5	90	16	45.3	—	2.5
63/110	236		419.5						M10x18				74	165	14						
63/130	256	63	130	—	72	97	95	30	459.5	M12x20	M8x20	77.5	81	215	15	—	110	21.5	48.8	51.8	3

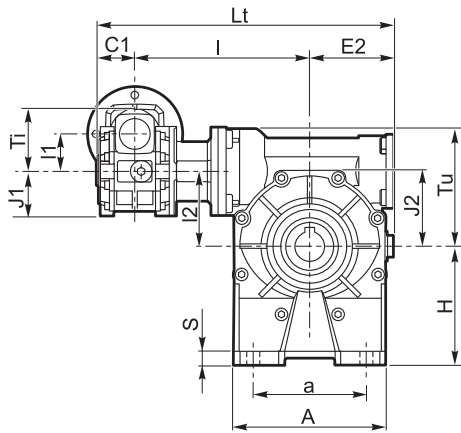


5.6 Dimensioni

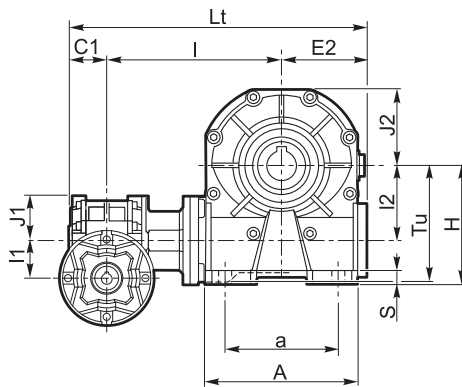
5.6 Dimensions

5.6 Abmessungen

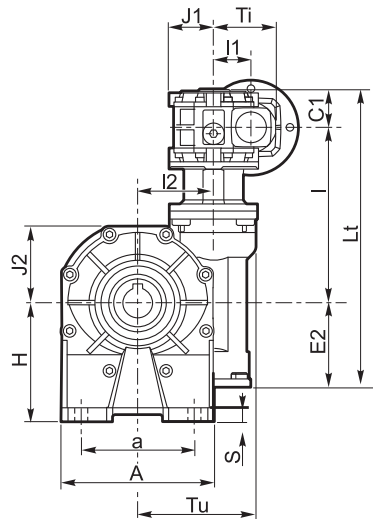
KKC\_A



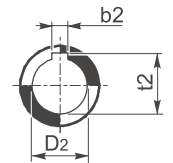
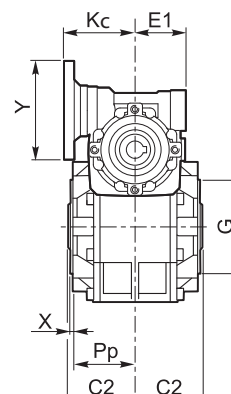
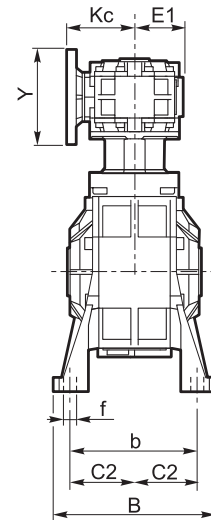
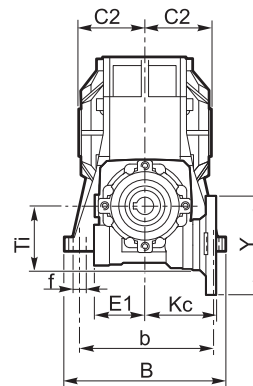
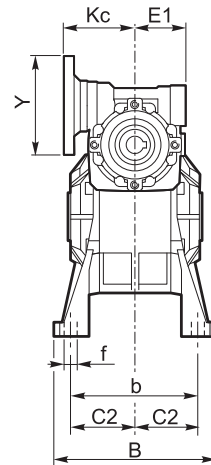
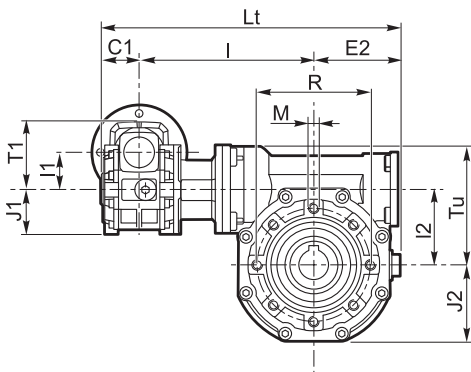
KKC\_B



KKC\_V



KKC\_P



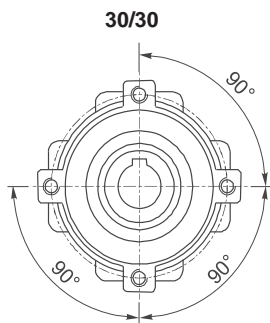
Albero uscita cavo  
Output hollow shaft  
Abtriebs-Hohlwelle

5.6 Dimensioni

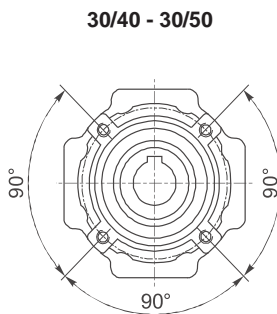
5.6 Dimensions

5.6 Abmessungen

Flangia pendolare / Side cover for shaft mounting / Aufsteckflansch

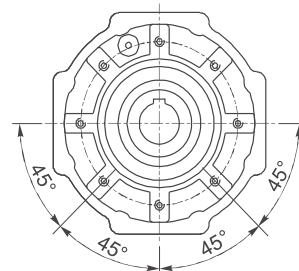


4 Fori / Holes / Bohrungen



4 Fori / Holes / Bohrungen

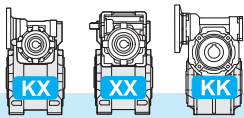
30/63 - 40/63 - 40/75 - 40/90 - 50/75  
50/90 - 50/110 - 63/110 - 60/130



8 Fori / Holes / Bohrungen

	KKC																							
	A		a		B		b		f		H		S		b <sub>2</sub>	C <sub>1</sub>	C <sub>2</sub>	D2 H7	E <sub>1</sub>	E <sub>2</sub>	G h8			
	1	2	1	2	1	2	1	2	1	2	1	2	1	2										
30/30	67		40-52		78		66		6.5		52	55	5	8	5	—	31.5	14	—	41	55			
30/40	86.5		70	52	98		84	81	7	8.5	71	72	6	6	6	—	39	18	19	51	60			
30/50	106		63-85		119		99		9		85	82	8	8	8	—	46	25	24	60	70			
30/63	127.5		95		136		111		11		100		12	8	—		56	25	—	51	71	80		
40/63																								
40/75	155.5		120		140		115		11		115		12	8	—		39	60	28	30	60	85	95	
50/75																								
40/90	190		140		168		140	146	13	11	135	142	10	—			39	70	35	—	51	103	110	
50/90																								
50/110	250		200		210		162	181	13	13	171	170	17	15	12	—		46	77.5	42	—	60	127.5	130
63/110																								
63/130	295		235	220	229		190	191		15	200	195	14	14	14	—	56	85	45	48	71	147.5	180	

	KKC															
	I	I <sub>1</sub>	I <sub>2</sub>	J <sub>1</sub>	J <sub>2</sub>	K <sub>c</sub>	L <sub>t</sub>	M	P <sub>p</sub>	R	T <sub>i</sub>	T <sub>u</sub>	t <sub>2</sub>	X		
30/30	100	31.5	31.5	37.5	37.5	57	171.5	M6x8	29	65	52.5	Tu	16.3	—	1.5	
30/40	122		40				43.5	203.5	M6x10	36.5		75	52.5	20.8	21.8	1.5
30/50	132		50				53.5	223.5	M8x10	43.5		85	52.5	27.3	1.5	
30/63	145	40	63	43.5	64	75	248.5	M8x14	53	95	68.5	100.5	28.3	—	2	
40/63	150						261									
40/75	176.5	50	75	53.5	78	82	301.5	M8x14	57	115	82.5	116.5	31.3	—	2	
50/75	192						324									
40/90	186.5	40	90	43.5	100	75	328.5	M10x18	67	130	68.5	116.5	38.3	—	2	
50/90	202						351									
50/110	226	63	110	53.5	122	82	399.5	M10x18	74	165	82.5	131.5	45.3	—	2.5	
63/110	236						419.5									
63/130	256	63	130	64	131	97	459.5	M12x20	81	215	100.5	181	48.8	51.8	3	

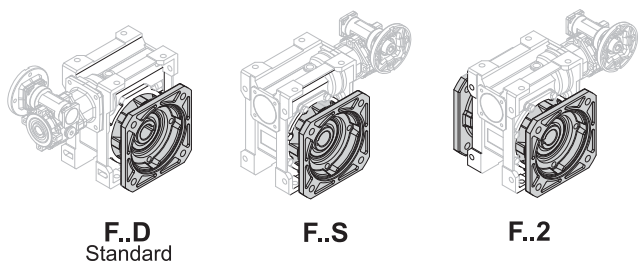
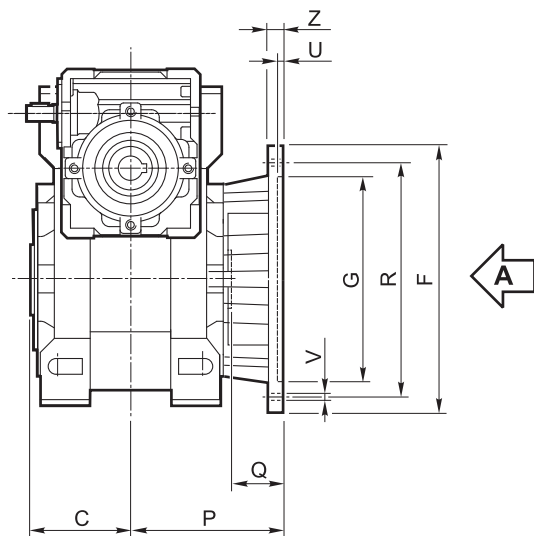


5.6 Dimensioni

5.6 Dimensions

5.6 Abmessungen

Flangia uscita / Output flange / Abtriebsflansch



Vista da A / View from A / Ansicht von A

<b>30/30</b>		<b>63/130</b>	
F1		F1	
—		F2	
—		—	
<b>30/30</b>		<b>63/130</b>	
<b>30/40</b>	<b>30/50</b>		
F1	F1	—	—
F2	—	—	F2
—	—	F3	—
<b>30/40 - 30/50</b>			
<b>30/63</b>	<b>40/75</b>		
<b>40/63</b>	<b>50/75</b>	—	—
F1	F1	—	F2
F2	—	—	—
—	—	F3	—
<b>30/63 - 40/63 - 40/75 - 50/75</b>			
<b>40/90</b>	<b>50/110</b>		
<b>50/90</b>	<b>63/110</b>	—	—
—	F1	F1	—
—	—	—	F2
—	—	F3	—
<b>40/90 - 50/90 - 50/110 - 63/110</b>			

KX XX KK	Tipo Type Typ	C	F		G H8	P	Q	R	U	V			Z
30/30	F1	31.5		66	50	54.5	23	68	4	n° 4		6.5	6
	F2												
	F3												
30/40	F1	39		85	60	67	28	75-90	4	n° 4		9	8
	F2			85	60	97	58	75-90	4	n° 4		9	8
	F3		140		95	80	41	115	5		n° 7	9	10
30/50	F1	46		94	70	90	44	85-100	5	n° 4		11	10
	F2			160	110	89	43	130	5		n° 7	11	11
	F3												
30/63 40/63	F1	56		142	115	82	26	150	5	n° 4		11	11
	F2			142	115	112	56	150	5	n° 4		11	11
	F3		160		110	80.5	24.5	130	5	n° 4		11	12
40/75 50/75	F1	60		160	130	111	51	165	5	n° 4		13	12
	F2			160	110	90	30	130	6	n° 4		11	13
	F3												
40/90 50/90	F1	70	200		152	111	41	175	5	n° 4		13	12
	F2		200		152	151	81	175	5	n° 4		13	13
	F3		200		130	110	40	165	6	n° 4		11	11
50/110 63/110	F1	77.5	260		170	131	53.5	230	6		n° 8	13	15
	F2		250		180	150	72.5	215	5	n° 4		15	16
	F3												
63/130	F1	85	320		180	140	55	255	7		n° 8 *	16	16
	F2		300	230	265								
	F3												

\* Foratura ruotata di 22.5°

\* Drilling turned of 22.5°

\* Durchbohrung 22.5° versetzt



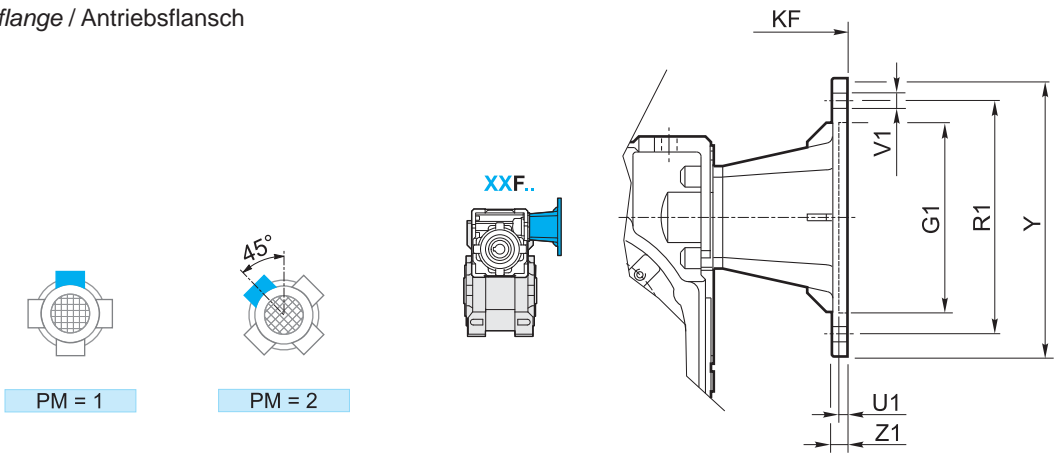


5.6 Dimensioni

5.6 Dimensions

5.6 Abmessungen

Flangia entrata / Input flange / Antriebsflansch



XXF	IEC	PM		G <sub>H7</sub>	K <sub>F</sub>	R <sub>1</sub>	U <sub>1</sub>	∅	V <sub>1</sub>			Y	Z <sub>1</sub>
		1	2						(Diagram 1)	(Diagram 2)	(Diagram 3)		
30/30 30/40 30/50 30/63	56 B5	•	•	80	82.5	100	3.5	7		8		120	8
	56 B14		•	50	82.5	65	3.5	6		4		80	8
	63 B5	•	•	95	85.5	115	4	9		8		140	10
	63 B14	•	•	60	85.5	75	3.5	6		8		90	8
40/63 40/75 40/90	56 B5	•	•	80	101.5	100	3.5	7		8		120	8
	63 B5	•	•	95	104.5	115	4	9		8		140	10
	63 B14	•	•	60	104.5	75	3.5	6		8		90	8
	71 B5	•	•	110	111.5	130	4.5	9		8		160	10
	71 B14	•	•	70	111.5	85	4	7		8		105	10
50/75 50/90 50/110	63 B5	•	•	95	119.5	115	4	9		8		140	10
	71 B5	•	•	110	126.5	130	4.5	9		8		160	10
	71 B14		•	70	126.5	85	3.5	7		4		105	10
	80 B5	•	•	130	136.5	165	4.5	11		8		200	10
	80 B14	•	•	80	136.5	100	4	7		8		120	10
63/110 63/130	71 B5	•	•	110	141.5	130	4.5	9		8		160	10
	80/90 B5	•	•	130	161.5	165	4.5	11		8		200	10
	80 B14	•	•	80	151.5	100	4	7		8		120	10
	90 B14	•	•	95	161.5	115	4	9		8		140	10

5.7 Limitatore di coppia cavo passante

5.7 Torque limiter with through hollow shaft

5.7 Drehmomentbegrenzer mit durchgehender Hohlwelle

XX-KX KK	N°. giri della ghiera di regolazione / N°. revolutions of ring nut / Nr. Umdrehungen der Mutter												
	1	1 1/4	1 1/2	1 3/4	2	2 1/4	2 1/2	2 3/4	3	3 1/4	1/2	3 3/4	4
30/30	22	27	33	38	43								
30/40	55	64	73	87									
30/50	75	97	120	157									
30/63		127	155	180	205	232	260	282					
40/63													
40/75			235	265	295	327	360	407	455				
50/75													
40/90			320	349	400	440	475	517	550	595	630	650	670
50/90													
50/110		720	815	910	1000	1100	1250						
63/110													
63/130													

I valori riportati in tabella si riferiscono ai limitatori nelle versioni LS e LD (riduttore uscita).

The values listed in the table refer to torque limiters in the LS and LD versions (output gearbox).

Die in der Tabelle angegebenen Werte beziehen sich auf die LS und LD Versionen (Getriebe am Abtrieb).